



BEST PRACTICE FOR SCHOOL TO EMPLOYMENT TRANSITIONS



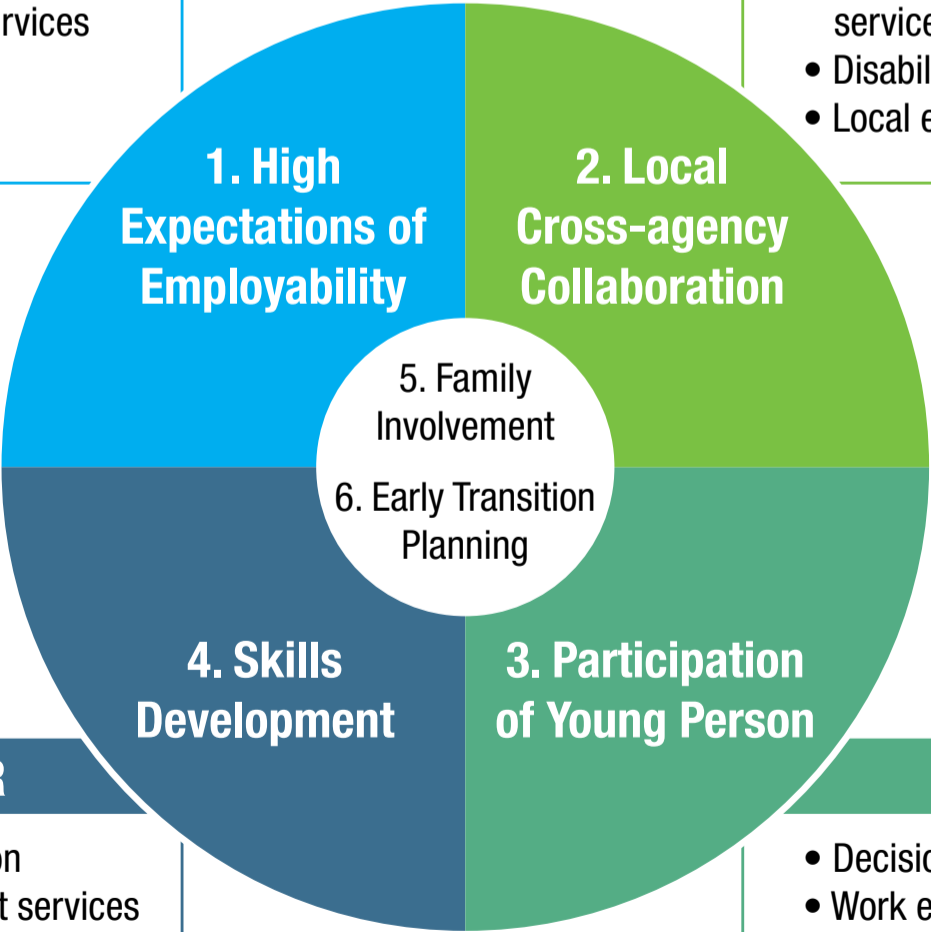
- 1** | Create an expectation at school, at home and in the community that young people with disability will seek and obtain employment as part of their adult life
- 2** | Collaborate locally with other service providers to form partnerships between schools, employment services and disability services
- 3** | Enable participation in work experience at multiple time points and provide opportunities for work experience in the same or different areas of work
- 4** | Provide collaborative cross-sector opportunities for scaffolded skill development and transfer of skills from one setting to another
- 5** | Involve families and local community supports at all levels of discussion about employment and post-school adult life roles
- 6** | Start transition planning early

BY

- Young person
- Schools
- Employment services
- Disability services
- Family
- Community

BETWEEN

- Transition school personnel
- Employment services personnel
- Disability services
- Local employers



FOR

- Young person
- Employment services personnel
- Transition school personnel

IN

- Decision-making
- Work experience
- Skills development